



Install & Configure Netscape® Enterprise Server for Novell NetWare 4.11

Written: September 19, 1998

Reviewed: January 27, 2003

Before You Begin

Installation of the Netscape Enterprise Server must be performed from a client workstation.

Workstation Requirements

- Windows 95, Windows 98 or Windows NT 4.0
- 32-bit version of the NetWare client
- Netscape browser version 3.x or above
- 100 MB of free disk space.

Server Requirements

- NetWare 4.11 or higher with Support Pack 4
- CLIB 4.11J (If version 4.11J or higher is not detected, the installation process will install it automatically.)
- Long filename support
 - To add long filename support, at server console type **load long.nam** and press ENTER
 - At server console type **add name space long to <volume name>**
- Novell's NLDAP gateway
 - If you want to integrate users and groups from your NDS tree with Enterprise's directory, Novell's NLDAP Gateway must be installed.
- 32 MB of RAM minimum (64 MB recommended)
- At least 100 MB of free disk space on the SYS: volume
- DNS must be running and accessible from the network to which the server is attached.

The Person Installing the Enterprise Server Needs

- Administrative rights to the sys: volume of the NetWare server
- IP address and netmask of the NetWare server
- IP gateway providing service to the NetWare server
- DNS hostname for the NetWare server
- Address of a DNS server to be used for IP address resolution.

Register Web Server Domain Name with MOREnet

For Instructions on Domain Name Service Registration go to:

<http://www.more.net/services/managed/dns/index.html>

Installation

1. Download file for Netscape Enterprise Server -- self-extracting executable. (Available from Novell's Web site at <http://www.novell.com>) Follow the links for Download and Netscape Servers for NetWare. After file is downloaded, go to the directory where downloaded file is stored and double click the file.
2. From the Windows Task Bar select Start
3. Select Run
4. Browse to directory where Enterprise files were extracted and select **setup.exe**. (*Note: If you are installing from a compact disc and the CD-ROM drive is D:, you would type D:\setup.exe*)
5. Click Open
6. Click OK
7. Netscape Enterprise Server for NetWare Welcome window appears. (Figure 1)

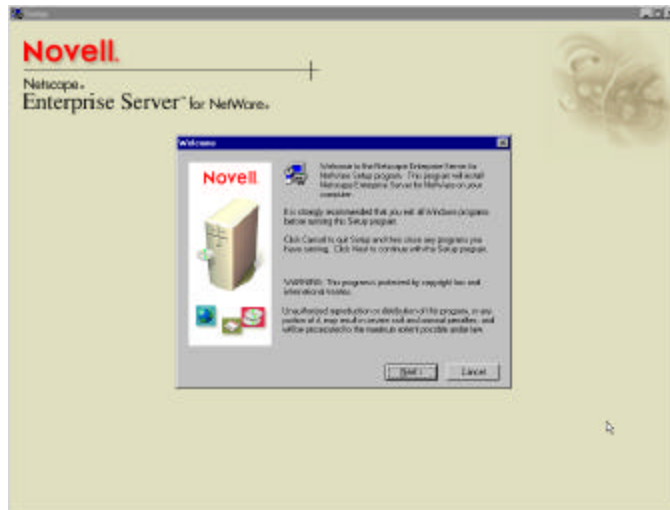


Figure 1 NetWare Welcome Screen

8. Click Next
9. License Agreement window appears.
10. Click Yes.
11. Choose Destination Location window appears. (Figure 2)



Figure 2 Choose Destination Location Screen

12. Click Browse and select destination (*Note: You must choose a drive mapped to the sys: volume on the server.*)
13. After destination folder has been selected, Click Next.
14. Configure Server window appears. (Figure 3)

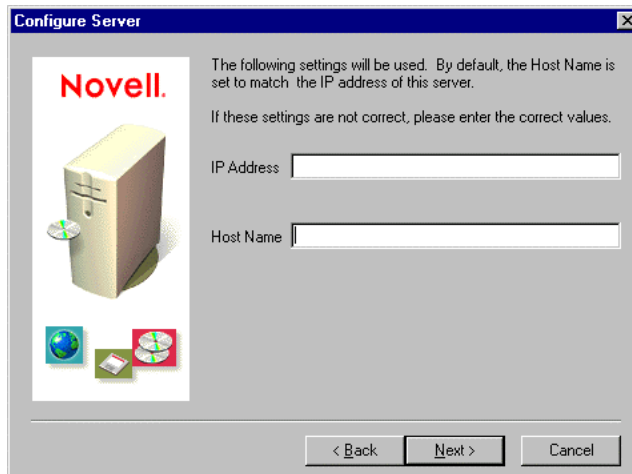


Figure 3 Configure Server Screen

15. Enter appropriate information.

- IP address – IP Address of destination server
- Host Name -- domain server name of destination server i.e. *servername.k12.mo.us*.
(*Note: To use a Host Name during installation, your server must have an entry in a DNS server. If you have not registered a name, you can use the IP address of the server.*)

15. Click Next

16. Web Server Configuration window appears. (Figure 4)

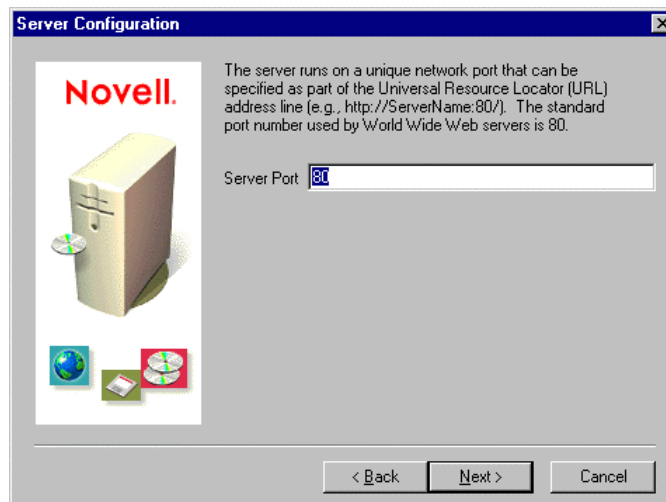


Figure 4 Web Server Configuration Screen

17. Enter Server Port number.

- If you use a port other than the default port (80), the address used to gain access to your homepage will change. i.e. If port 763 is used, the address for the server would be *servername.k12.mo.us:763/*

18. Click Next.

19. Administrative Server Port Configuration window appears. (Figure 5)

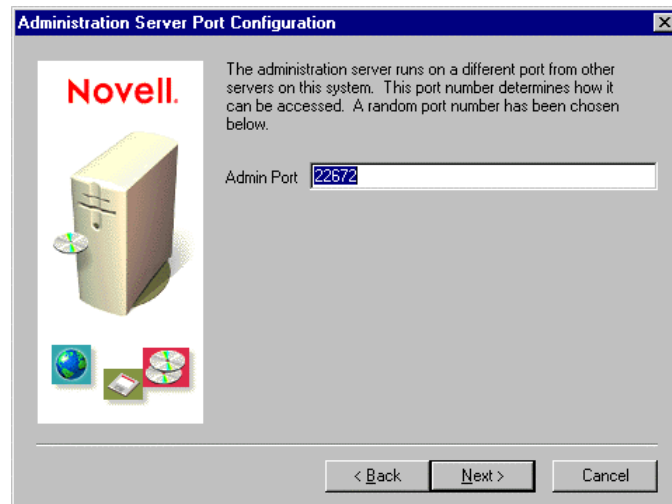


Figure 5 Administrative Server Port Configuration Screen

20. Enter Admin Port number.

- By default, setup generates a random number. You may accept the random number or choose a number yourself. Using a random number will make it more difficult for someone to gain unauthorized access to your server. If you choose to enter a different port number, make sure the number isn't in use. If the number is being used, the installation program will prompt you for another port. *(Note: You will need to remember this port number. It is used to access the Administration Server.)*

21. Click Next

22. An Administration Port Information window appears.

23. Click OK

24. Administration Server Authentication window appears. (Figure 6)



Figure 6 Administration Server Authentication Screen

25. Enter a Username and Password. (These will be used to access the Administration Server.)

26. Click Next

27. LDAP information window appears.

- You can use LDAP to administer user and group information on the server. If you have LDAP for NDS installed, you can also administer the user and group information from NWAdmin.

28. Click Next

29. Autoexec.ncf Options window appears. (Figure 7)

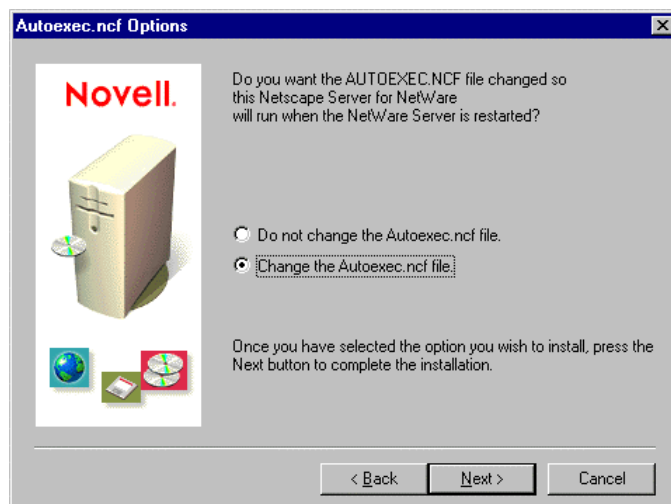


Figure 7 Autoexec.ncf Options Screen

30. Make selection, Click Next. (If Change the autoexec.ncf file is selected, the Enterprise server will automatically start each time the NetWare server is started.)
31. Start Copying Files window appears.
32. Review the information you've entered so far. If you've entered something incorrectly, you can go backward through the previous screens by clicking the Back button.
33. Click Next to begin the installation..
34. The Installation Program copies files.
35. Setup Complete window appears. (Figure 8)

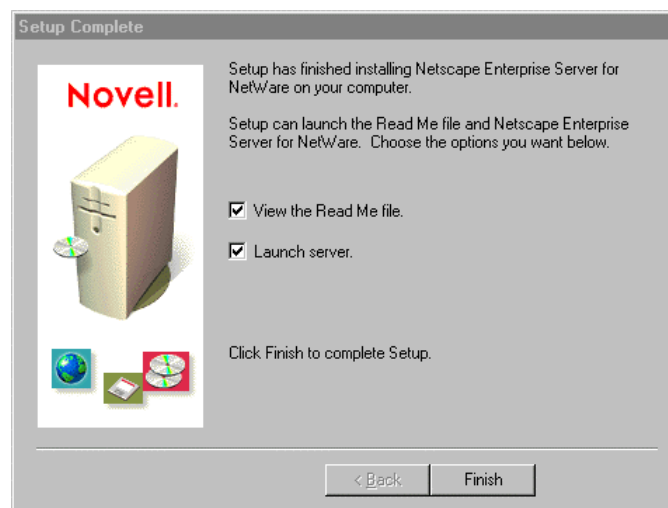


Figure 8 Setup Complete Screen

36. You have the option of viewing the Read Me file and/or launching Enterprise server.
37. Click Finish to complete setup.
38. Restart server.

Change Configuration of Netscape Enterprise Server and Administration Server

The Server Administration page is used to access configuration forms for Netscape Enterprise Server and Administration Server. To access the default Server Administration page, the Administration Server must be loaded on the Novell server. (*Note: If you selected the "Change Autoexe.ncf" option during the Enterprise Server installation, skip to number 2*)

1. At server console type **nsweb** (This command executes an NCF file that starts the server.)
2. Open a Web browser and enter the address of the Administration Server. (*Note: The browser must be Netscape 3.x or higher*)
 - The address of the Administration Server consists of the server's host name or IP address, a colon and the administration server's port number. (The host name and administration server port number were configured during the Enterprise server installation.) Example:

`http://myserver.k12.mo.us:92236`

1. Enter User Name and Password when prompted. (These were configured during the Enterprise server installation.)
2. The Server Administration page appears. (Figure 9)



Figure 9 Netscape Server Administration Screen

From the Server Administration page you can access Online Help (Help link in upper right), configuration forms for the administration server (icons under General Administration), and configuration forms for the Netscape Enterprise Server (server name button under Servers Supporting General Administration). You can also stop and start the Enterprise Server from this page.

Stop/Start Netscape Enterprise Server

Once installed, the Enterprise server runs constantly. If the server is running, the On icon in the Server Administration page appears green. The server can be stopped and started by clicking the Off and On icons. (*Note: If the server is running and the On button is clicked, the server will restart.*) The Enterprise server can also be stopped and started from the Novell server console.

1. To stop the server, at server console type **unload nshttpd**.
2. To start the server, at server console type **nsweb**

Netscape Enterprise Server Configuration

Forms used to configure the Netscape Enterprise Server are accessed through Server Manager. Server Manager is a three-frame page with category buttons in the top frame and form links in the left frame. To use Server manager, click a category button in the top frame, then click a form link in the left frame. A form appears in the right frame where you can select options and specify values to configure the server. To save changes click OK.

Open Server Manager

On Server Administration page, Click the Enterprise server name button (Under Servers Supporting General Administration). Category buttons include Server Preferences, Programs, Server Status, Configuration Styles, and Content Management. By default Server Preferences is selected.

Publish Documents

The Netscape Enterprise Web Server uses SYS:NOVONYX\SUITESPOT\DOCS as the default Primary Document Directory.

Change Primary Document Directory

1. From the Server Manager Page click Content Management
2. Click Primary Document Directory
3. Type the full path name for the Primary Document Directory
4. Click OK
5. Click Save and Apply

Specify Additional Directories

1. From the Server Manager Page click Content Management
2. Click Additional Document Directories.
3. In the URL Prefix field type a “logical” directory name to appear as part of the web address.
4. In the Map To Directory field, type the “absolute” path of the directory where the information is stored. (i.e. If John Doe wants to publish information located in his home directory, you could list the “logical” directory as JDOE\ and the absolute path as \HOME\JOHNDOE. When users access http:\ wherever.k12.mo.us\jdoe\ they would actually be looking at information in the \HOME\JOHNDOE directory.)
5. Click OK.

Additional Configuration Options

Additional Enterprise Server configuration forms available through Server Preferences.

- On/Off – Turn server on or off.
- View Server Settings – View technical and content settings (Figure 10)



Figure 10 View Server Settings Screen

- Restore Configuration – View or restore a backup copy of configuration files.
- Performance Tuning -- Configure server's technical options, i.e. number of maximum simultaneous requests, listen-queue size, and DNS usage
- MIME Types – Add or remove MIME types
- Network Settings – Change server's network settings (Figure 11)

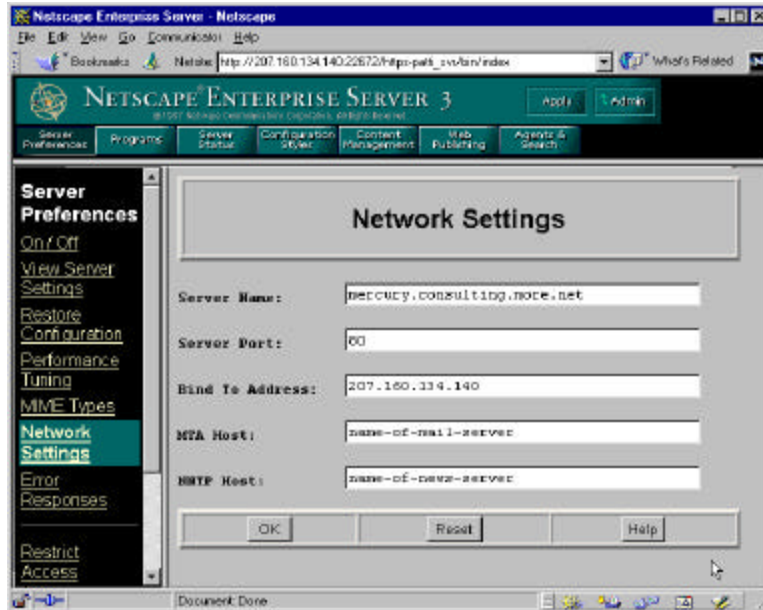


Figure 11 Network Settings Screen

- Error Responses – Specify a custom error response that sends a detailed message when errors are encountered
- Restrict Access – Manage server’s access control list
- Encryption On/Off – Turn encryption on or off, change port number, select alias
- Encryption Preferences – Change encryption preferences

Form Links available through Programs

- CGI Directory – Change or add CGI directory path
- CGI File Type – Specify CGI as a file type
- Query Handler – Specify default query handler CGI program
- Server Side Javascript – Activate server side Javascript

Form Links available through Server Status

- View Access Log – View active and archived log files
- View Error Log – View error log file contents i.e. errors, information messages, incorrect user authentication attempts
- Monitor Current Activity – Monitor server’s current resource usage
- Archive Log – Specify parameters for archiving log files
- Log Preferences – Specify configuration parameters for log files
- Generate Report – Generate server statistic reports (Figure 12)
- SNMP Subagent Configuration -- Specify parameters to monitor server in real time.

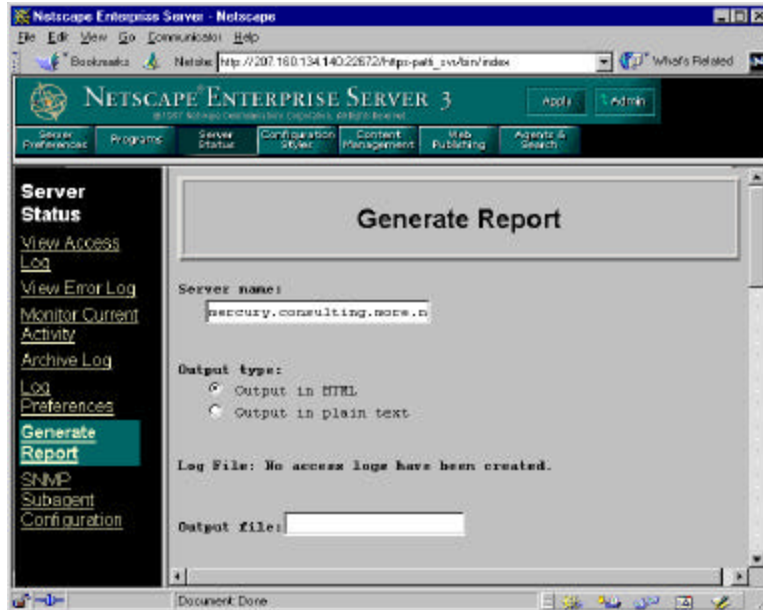


Figure 12 Generate Report Screen

Form Links available through Configuration Styles (*Note: Configuration styles are used to apply a set of options to specific files or directories.*)

- New Style – Create a new style
- Remove Style – Remove a style
- Edit Style – Edit a style
- Assign Style – Assign a style
- List Assignments – List style assignments

Form Links available through Content Management

- Primary Document Directory – Primary directory path information
- Additional Document Directories – Specify paths to additional directories
- Document Preferences – Specify document preferences (Figure 13)

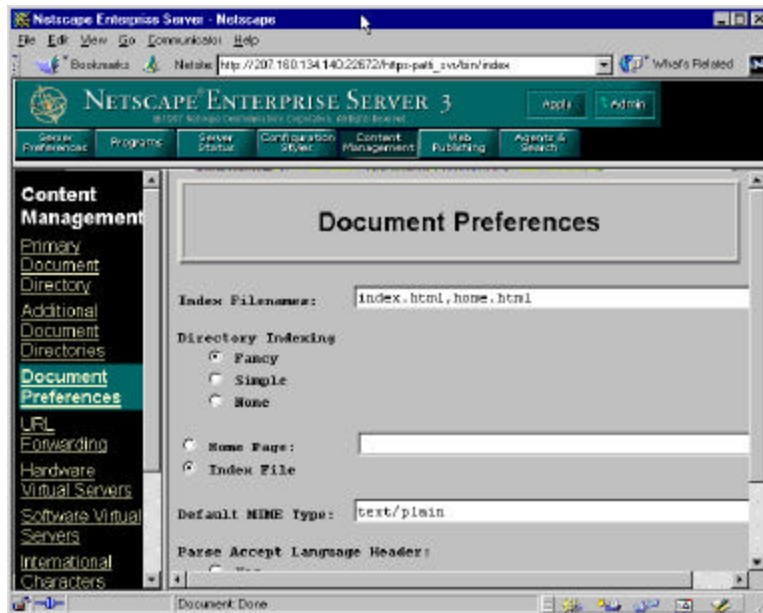


Figure 13 Document Preferences Screen

- URL Forwarding – Specify forwarding addresses
- Hardware Virtual Servers – Specify configuration for Hardware Virtual Server
- Software Virtual Servers – Specify configuration for Software Virtual Server
- International Characters – Specify international character character set
- Document Footer – Specify configuration for document footer
- Parse HTML – Activate and configure server-parsed HTML
- Cache Control Directives – Controls for information caching

Form Links available through Web Publishing System

- Web Publishing State -- Turn Web Publishing On or Off
- Web Publishing Language -- Specify Language (Default English)
- Maintain Web Publishing Data -- Select functions to maintain Web Publishing Data
- Link Management -- Automatic Link Checking and Updating configuration
- Version Control -- Allows you to keep track of files and documents as they are updated and changed
- Unlock File -- Allows you to unlock a locked file
- Add Custom Property -- Allows you to add your own custom web publisher file properties
- Manage Properties -- List all file properties available for use.
- Index and Update Properties -- Used to perform bulk indexing of documents and assignment of owner properties for files included in collection.

Form Links available through Agents & Search

- Agent Management -- Parameters for Agent Services. (Note: To use Agent Services, MTA and NNTP hosts must be defined for your server.)
- Search State -- Turn Search Capabilities On or Off
- New Collection -- Create a collection that indexes the content of all or some of the files in a directory
- Configure Collection -- Modify initial collection settings
- Update Collection -- Add or remove files in a collection
- Maintain Collection -- Perform Maintenance on a collection
- Schedule Collection Maintenance -- Schedule collection maintenance at regular intervals.
- Remove Scheduled Collection Maintenance -- Used to remove scheduled collection maintenance
- Search Configuration -- set default parameters governing what search results users see.
- Search Pattern Files -- Define layout of text search interface.

Administration Server Configuration

Forms used to configure the Administration Server are accessed through the Server Administration page. Category buttons include Admin Preferences, Global Settings, User & Groups, Keys & Certificates, and Cluster Management.

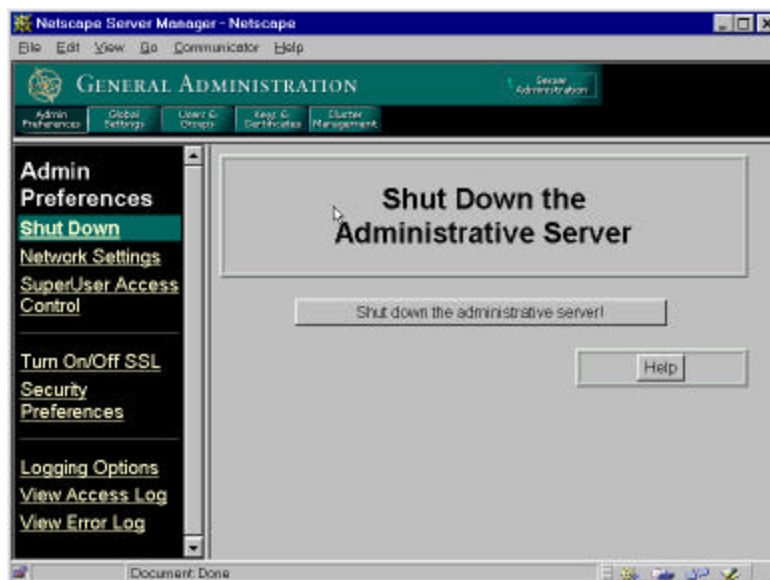


Figure 14 Admin Preferences Screen

Form Links available through Admin Preferences (Figure 14)

- Shut Down – Shut down administrative server.
- Network Settings – Change or reset settings for admin server port.
- SuperUser Access Control – Configure server access parameters i.e. hostnames to allow, IP addresses to allow, authentication user name, authentication password
- Turn On/Off SSL – Turn encryption on and off and configure an alias
- Security Preferences – Specify security preferences
- Logging Options – Define paths for log files
- View Access Log – View access log information
- View Error Log – View error log information

Form Links available through Global Settings

- Configure Directory Service – Specify location to be used to obtain directory services for organizing users and groups.

Form Links available through Users & Groups

- New User -- Create and edit users
- Manage Users – Find users
- New Group – Create and edit groups
- Manage Groups – Find groups
- New Organizational Unit – Create organizational unit
- Manage Organizational Units – Find organizational units
- Import – Import directory information from LDIF file
- Export – Export directory Information to LDIF file

Form Links available through Keys & Certificates

- Create Alias – Create alias using existing files
- Remove Alias – Remove an alias
- List Aliases – List all aliases
- Generate Key – Generate a key pair file
- Change Key Password – Change a key pair file password
- Request Certificate – Request a server certificate
- Install Certificate – Install a server certificate
- Manage Certificates – Manage server certificates

Form Links available through Cluster Management

- Cluster Control – Control cluster servers
- Add Server -- Add remote server to cluster database
- Modify Server – Modify cluster server
- Remove Server – Remove server from cluster