



Image Processing Software

Lucis[®] Image Processing Software, an easy, fundamentally new way to view image content

Images often contain hundreds to tens of thousands of contrast levels. Our eyes can only differentiate 32 levels of contrast. Therefore fine contrast variations are only partially recognized as textures our eyes can't resolve.

Lucis[®] makes visible the fine contrast variations (details) you would like to see.

Using two cursors (sliders) in Preview Mode, select the range of contrast variances to view. Lucis compares each pixel to every other pixel along hundreds of radial lines in two directions to map out contrast variances. Contrast variances within the selected range are enhanced and contrast variances outside the range are diminished. The relative emphasis of contrast information is shifted, but information is not thrown away. Lucis reveals detail that other image-processing methods can't.

Lucis reveals detail throughout the image, in both the bright and dark areas.

Dinoflagellate images courtesy of Prof. Brian Matsumoto, U. of Southern California, Santa Barbara, CA. The single-luminance-channel Lucis image most clearly defines the transparent reticulum of the cell and reveals details within the dark central mass of the chloroplasts. Lucis most fully reveals the full extent of the central fissure that divides the mass into two halves and shows details, such as varicosities, within the transparent strands.

Lucis processing only effects the intensity information in an image. To process a color image, Lucis converts the RGB (Red Green Blue) information to HSL (Hue Saturation Luminance). Lucis processes the Luminance information, and then combines the new Luminance (L') with the unaltered Hue and Saturation. The HSL' information is converted to RGB. Color images will experience color shifts as Lucis extracts the image detail.

Lucis 4.2.1 processes color images as single luminance channel images.

Lucis Pro 5.0 allows the user to process each RGB channel separately with differing Lucis processing parameters, so the details in each color can be seen as clearly as possible. This is essential for applications like Fluorescence Microscopy.

Develop Image Processing Software. Digital and Optical Image Processing & Analysis. Testing. Prototypes and Turnkey Systems. Software and Hardware Development. Consulting, Project Reviews & Control,...

Coreco Imaging Computer Vision, DSP & Compression Hardware Products, Image Processing Hardware & Software Products

A & B Software LLC: Manufacturer of image analysis & image processing software.



شرکت گروه مشاورین آهو پیشرو (با مسئولیت محدود)

Black Ice Software, Manufacturer & distributor of document management & image processing software. Products include fax application, printing & imaging software. Fax application software includes fax broadcasting...

Spectra Services, Inc : Distributor of image processing software. Features include full 3-D viewer, real-time 3-D preview visualization, image loader, interoperability, manual object segmentation, automated analysis,...

Brand Names: Media Cybernetics, Bitplane, VisionGauge

Powerful 2D and 3D image processing, enhancement, and analysis software with extensive measurement and customization features

Image-Pro Plus is the ultimate image analysis software package for fluorescence imaging, quality assurance, materials imaging, and various other scientific, medical, and industrial applications.

The most powerful member of the Image-Pro software family, Image-Pro Plus includes extensive enhancement and measurement tools and allows you to write application-specific macros and plug-ins.



Key

Work With a Proven Solution - Reflecting over 20 years of development, evolution, and user feedback, Image-Pro Plus provides a full range of utilities for capturing, communicating, processing, measuring, analyzing, archiving, reporting, and printing.

Benefits

Spend Time on What's Important - Image-Pro Plus' user-friendly environment enables you to spend less time learning to use your software and more time analyzing and learning from your images.

Automate Your Research - Compress lengthy operations into a single keystroke or mouse click with Image-Pro Plus' Auto-Pro programming language.

Join an Imaging Community - When you use Image-Pro Plus, you are instantly part of a worldwide imaging community. Our imaging Training Courses, Image Analysis Forum, and the searchable online database Solutions Zone allow you to expand your imaging knowledge and learn new techniques from others.

EIKONA3D : for windows is an integrated , powerful and flexible software package for 3D image processing, analysis and visualization.

Info@Ahoog.com

www.Ahoog.com



Image analysis solutions for scientists and professionals in research, medicine, production and quality control :

Image-Pro Family : Award-winning image analysis software packages

- **Image-Pro Plus :** Powerful 2D and 3D image analysis software with extensive measurement functionality.
- **Image-Pro Express:** Cost-effective image capture and analysis software.
- **Image-Pro Bundled Solutions :** Combining Image-Pro software with microscope control, 3D rendering, and other advanced analysis tools.

Captiva Image Capture Software : Captiva is the entry level in the Clemex family of image analysis software. A cost effective solution for those that need basic imaging tools or simply for an image capture station. Whether you need to load images from a digital camera, video, scanner, twain component, optical microscope and even electronic microscope, with Clemex Captiva you get an entry-level software application with a robust set of tools specifically made for image acquisition, annotation, direct measures, and report generation. Clemex Captiva is an intuitive package ready to use from day one.

Clemex

Vision

Lite

Acquire, Measure and Analyze with Pre-built Imaging Routines

Clemex Vision Lite is a flexible yet affordable software solution that enables you to acquire, measure and even analyze your images using optional pre-built imaging routines. From basic image acquisition, to adding non-destructive annotations, to performing manual and automated measures, Clemex Vision Lite is the right choice if you do not require advanced toolsets for developing complex image analysis routines.

Clemex

Vision

PE

Complete Image Analysis Software

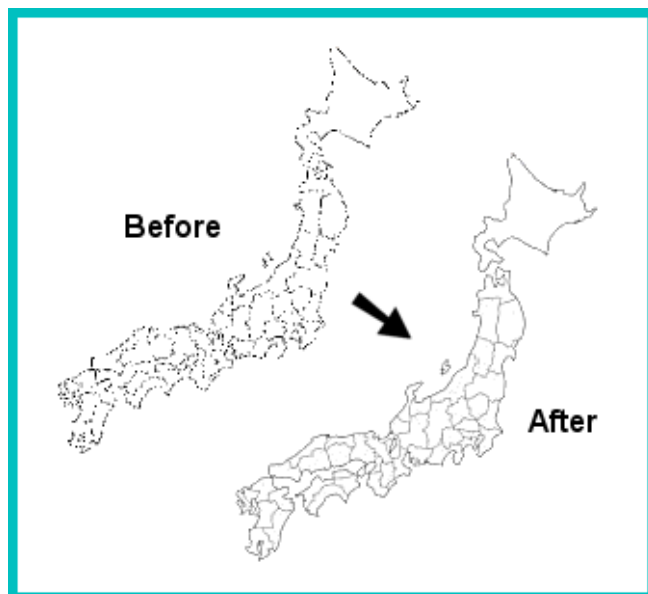
A powerful image analysis software application, Clemex Vision PE, is available as a stand-alone solution or part of a turnkey image analysis system including all necessary hardware components. From measuring grain size to counting particles, Clemex Vision is an intuitive software program that empowers you to easily develop custom image analysis macros without writing a single line of code!

The ImageKit7 is a component that allows you to add image processing functionality to your applications quickly and easily. Retrieve images from TWAIN scan devices; load and save image files; edit, display, and print images; draw shapes and text on images; display images as thumbnails or in slideshows. Most all of the ImageKit7 functionality is available in DLL style API.

The ImageKit7 ActiveX component can be used in Visual Studio .NET 2005/2003/2002 via COM wrapper. .NET sample programs are included.

The ImageKit7 ActiveX is fully loaded with many new features. It supports for JPEG2000, SVG, SXF, and other new file formats; loads and saves image data directly from memory; can stream image data directly to browser; can read BLOB data from and save BLOB data to database; can convert raster image data to vector image data; can automatically detect paper when scanning; and many others.

The ImageKit7 is a multi-threaded component that provides powerful web server application development. Included in this new version are methods that support variant type parameters for use in ASP and other scripting languages that require variant types. Therefore you can pass variant type variables used in scripting languages directly as parameters in these new methods.





Software Comparison Chart

	Captiva	Vision Lite	Vision PE
Acquisition			
Capture images from TWAIN, FireWire, or analog cameras	✓	✓	✓
Multiple camera support	✓	✓	✓
Full size live image preview	✓	✓	✓
Support for multiple calibration settings according to camera and magnification	✓	✓	✓
Direct camera setting control from software (supported USB & FireWire cameras)	✓	✓	✓
Live shading corrector for equalizing lighting	✓	✓	✓
Save/Load tiff, bmp, pcx, tga, psd, and jpg images	✓	✓	✓
Multi-Layer grab, with or without motorized stage	✓	✓	✓
Mosaic, with or without motorized stage	✓	✓	✓
Non destructive annotations	✓	✓	✓
Image Display			
View multiple images with image viewers, compare with live image	✓	✓	✓



Display captured image in grey scale, color, or pseudo-color	✓	✓	✓
Zoom in/zoom out	✓	✓	✓
Image fit to window	✓	✓	✓
Image panning	✓	✓	✓
Four desktop views for easy viewing of windows		✓	✓
Multiple non-destructive annotation tools, including: freehand lines, squares, ellipses, arcs, poly-lines, polygons, insert bitmaps, text boxes, and full control over scale-line parameters	✓	✓	✓
Image Processing			
Custom routine development, unlimited number of routines			✓
Enhancement filters, such as: delineate, smooth, sharpen, invert ...		4 included	over 30
Manual grey threshold		✓	✓
Automatic grey threshold		✓	✓
Color threshold according to hue, saturation and intensity		✓	✓
12 workable bitplanes		✓	✓
Binary operations, such as: chord size, trap, Boolean, transfer...		13 included	over 35
Automatic Object and Field Measurement Tools			



Object measures including: area, perimeter, length, width, angle, aspect ratio, sphericity, roundness ...		8 included	over 60
Field measure including: area, average area, area percent, count, density, intensity, horizontal / vertical intercept ...		9 included	over 20
Relative Measures : object percent			<input checked="" type="checkbox"/>
Relative Measures: area percent		<input checked="" type="checkbox"/>	<input checked="" type="checkbox"/>
Object transfer by limits and/or custom parameters			<input checked="" type="checkbox"/>
Unlimited Custom measurements			<input checked="" type="checkbox"/>
Analysis			
Direct point-to-point measurement tools, including: freehand lines, angles, arcs, and poly-lines/polygons		<input checked="" type="checkbox"/>	<input checked="" type="checkbox"/>
Automatic object and field mapping, requires motorized stage	<input checked="" type="checkbox"/>		
Results display in histogram, scatter plot, or tabular format	<input checked="" type="checkbox"/>	<input checked="" type="checkbox"/>	<input checked="" type="checkbox"/>
Export results to MS Excel	<input checked="" type="checkbox"/>	<input checked="" type="checkbox"/>	<input checked="" type="checkbox"/>
Application Packages			
Dendritic arm spacing		optional	optional
Grain and cell sizing		optional	optional
Thickness measuring		optional	optional



Particle sizing		optional	optional
Phase analysis		optional	optional
Fibers Analysis		optional	optional
Cast iron ASTM A247 module		optional	optional
Inclusion content ASTM E1245		optional	optional
Report Generation			
Automated report generator based on user customized excel templates		optional	optional
Enhanced Add-Ons			
Clemex R'Kive Explorer - tightly integrated image database	optional	optional	optional
Motorized Stage / Joystick controller for X, Y, and Z - recommended for mosaic, multi-layer grab features and multiple field analysis	optional	optional	optional
3D rendering			optional